

Differential Diagnosis of Radiolucent Lesions of the Jaws

Multifocal Radiolucencies

- Multiple Dentigerous Cysts
- Gorlin Syndrome
- Langerhans Cell Histiocytosis
- Squamous Odontogenic Tumor
- Thalassemia
- Cherubism

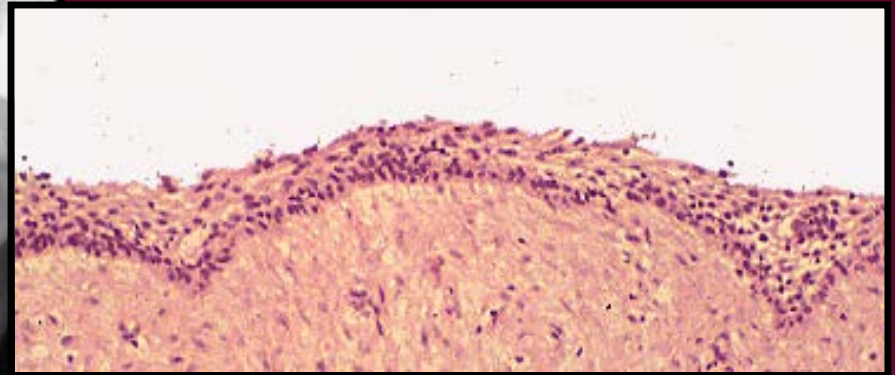
Multiple Dentigerous Cysts

- Multiple Wisdom Tooth Impactions
- Multiple Canine Tooth Impactions
- Epithelial Lining
 - Reduced Enamel Epithelium
 - Stratified Squamous Epithelium

Multiple Dentigerous Cysts



- Stratified Squamous

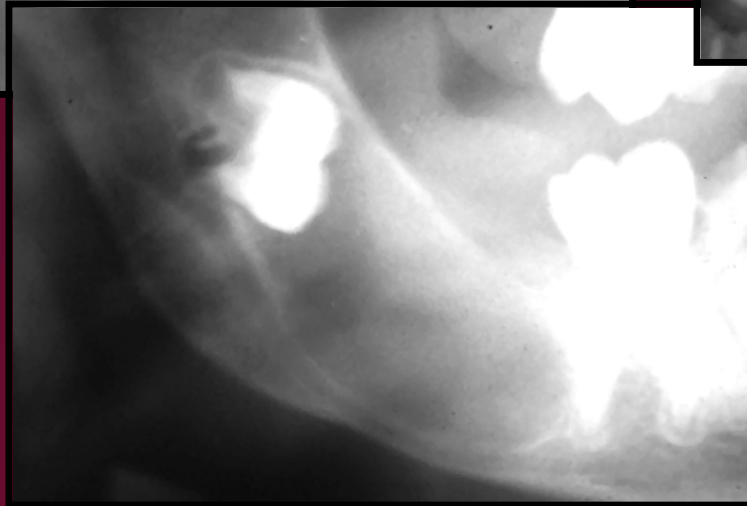
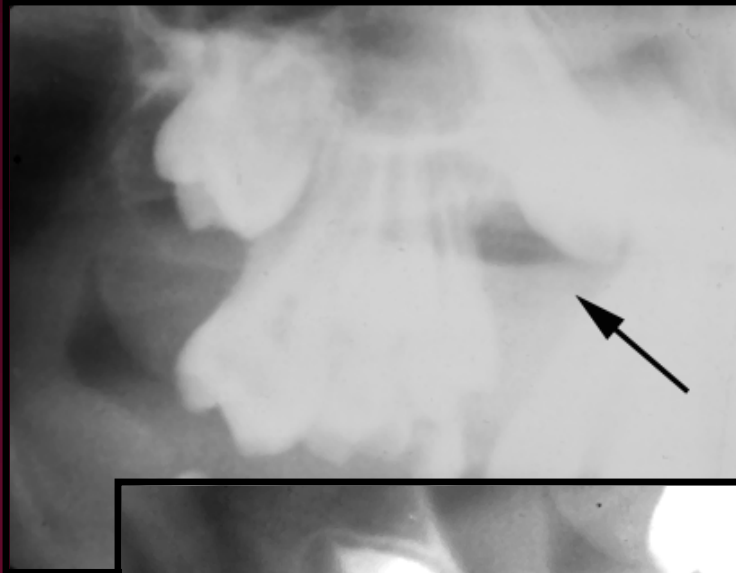


Gorlin Syndrome

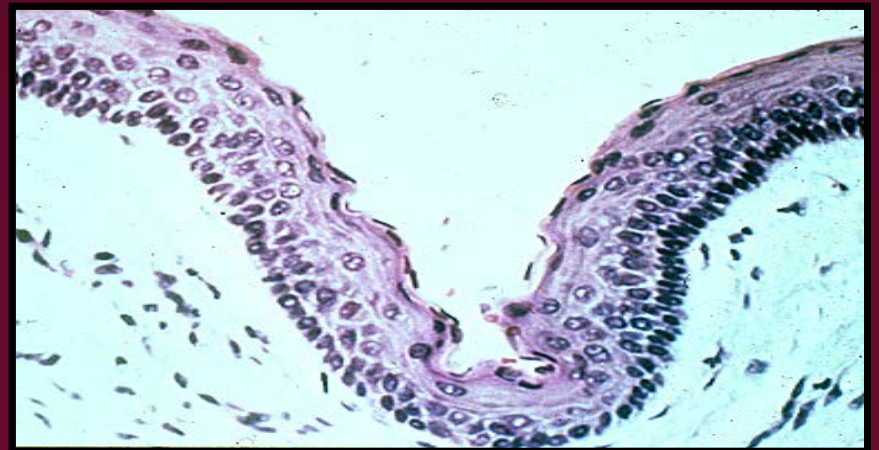
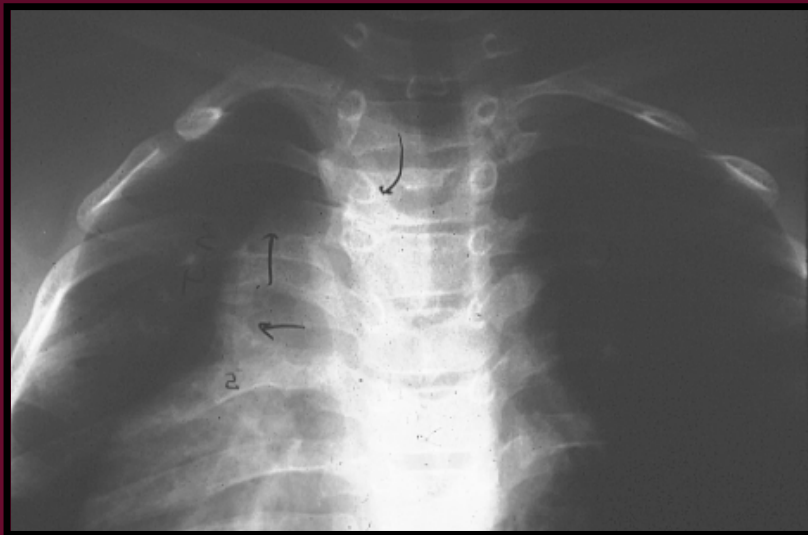
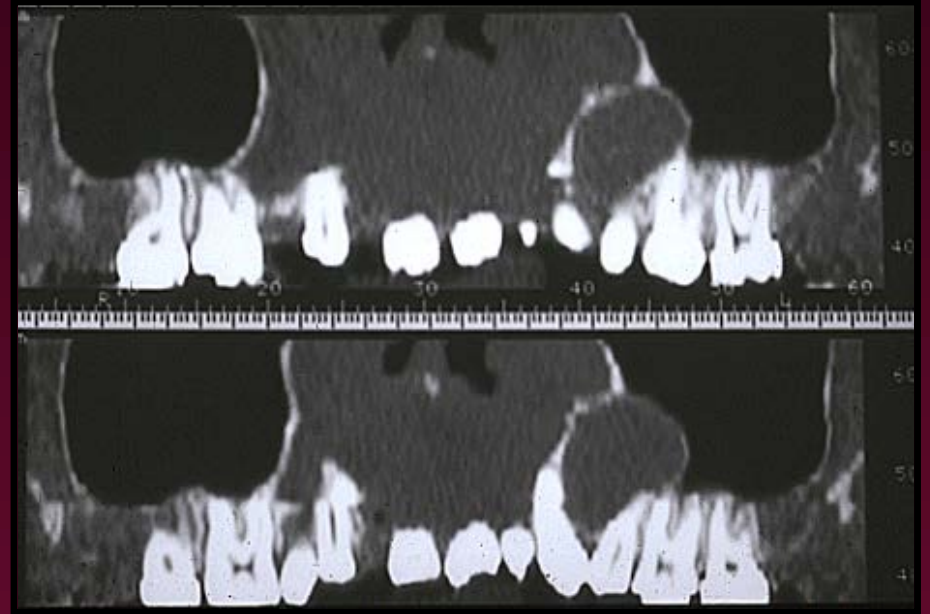
- Multiple Odontogenic Keratocysts
- Nevoid Basal Cell Carcinomas
- Rib anomalies, bifid ribs
- Frontal bossing
- Palmar/plantar pitting
- Calcified falx cerebri
- Medulloblastoma
- Mutation in Patched Gene of the sonic hedgehog pathway

Nevoid Basal Cell CA Syndrome (Gorlin Syndrome)

- Radiographic



Gorlin Syndrome



Langerhans Cell Histiocytosis

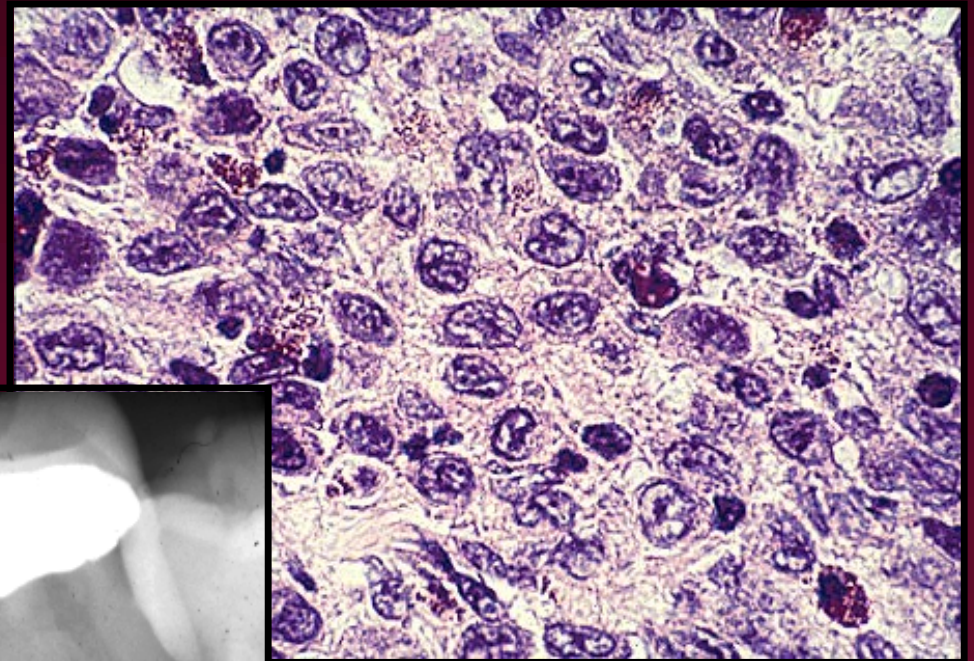
- Infiltration of Langerhans cell histiocytes of soft tissue and bone
- Acute Disseminated
 - Skin, liver and spleen
- Chronic Disseminated
 - Exophthalmos, diabetes insipidus, bone
- Chronic Localized
 - Lungs, bone

Langerhans Cell Histiocytosis

- Radiographic



- Histiocytes, Eosinophils

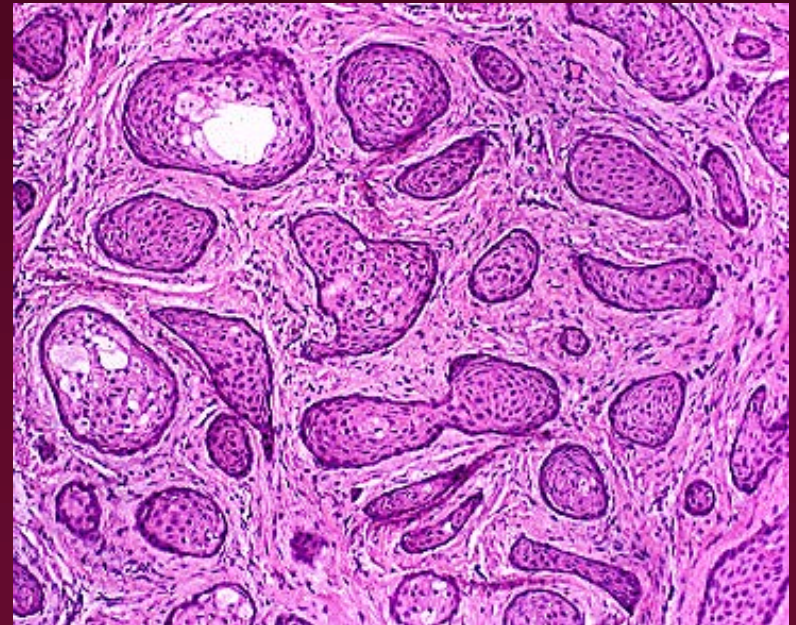


Squamous Odontogenic Tumor

- Radiographic



- Histopathology



Thalassemia Major

- A Multitude of Genetic Hemoglobinopathies are subsumed under Thalassemia
- Major form is heterozygous, minor form is homozygous
- Multifocal jaw lucencies

Thalassemia Major



Thalassemia



Familial Fibrous Dysplasia (Cherubism)

- Autosomal dominant
- Childhood onset
- Bilateral multilocular lucencies of body and ramus of mandible, maxilla occasionally involved
- Multiple unerupted teeth
- Treatment
 - Mild cases: none, lesions fill with mature bone
 - Severe cases: cosmetic contouring
 - Orthodontic therapy

Cherubism

