

Inter-radicular Lesions

- Focal Osteosclerosis
- Calcifying Epithelial Odontogenic Cyst
- Dentinogenic Ghost Cell Tumor
- Ossifying Fibroma
- Focal Osseous Dysplasia
- Odontogenic Adenomatoid Tumor
- Odontoma

Focal Osteosclerosis

- Body of mandible
- Minimal root divergence
- Nonexpansile
- Irregular in Outline
- Lacks lucent halo
- Asymptomatic
- Etiology ?
- No Treatment

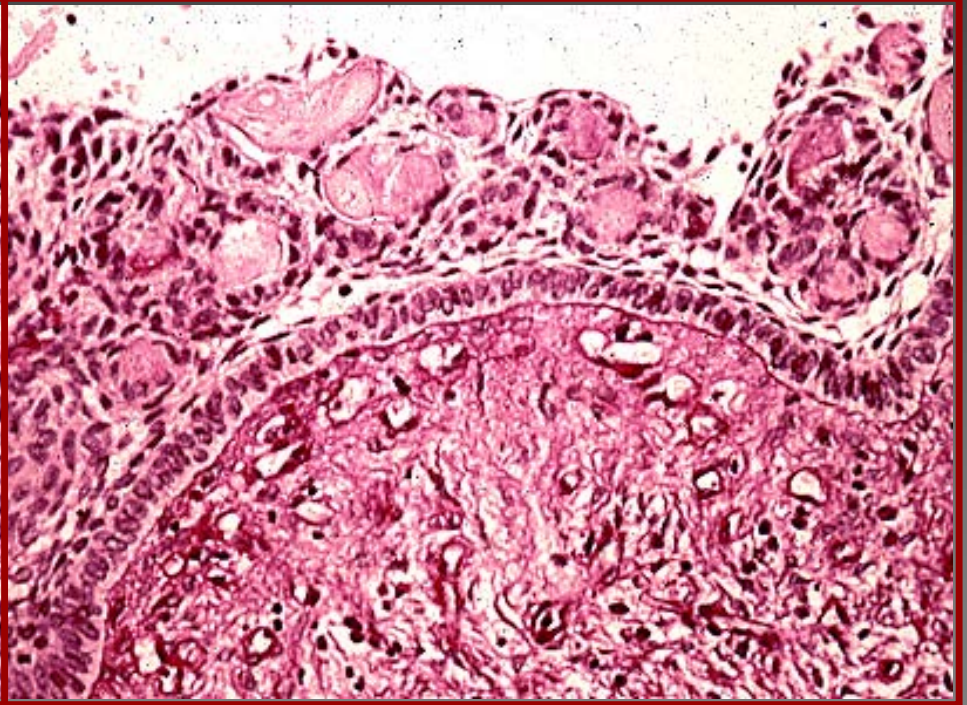
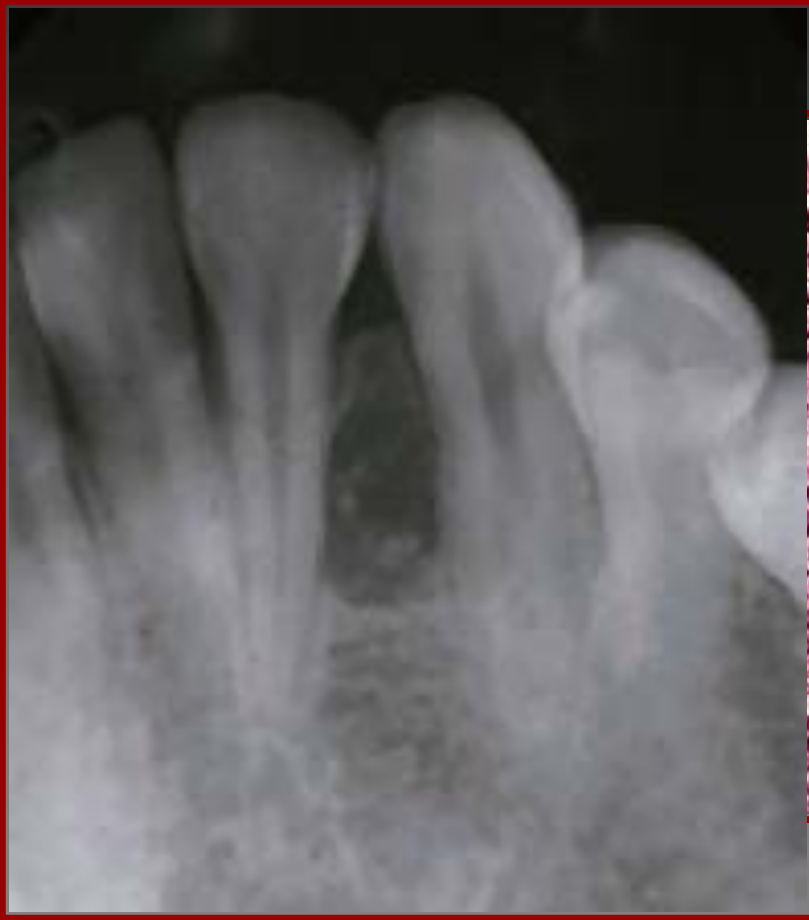
Focal Osteosclerosis



Calcifying Epithelial Odontogenic Cyst

- Gorlin Cyst; solid variant is termed Odontogenic Ghost Cell Tumor
- All ages
- Posterior Mandible
- Target Appearance
- Peripheral Variants
- Component of Odontomas
- Enucleation

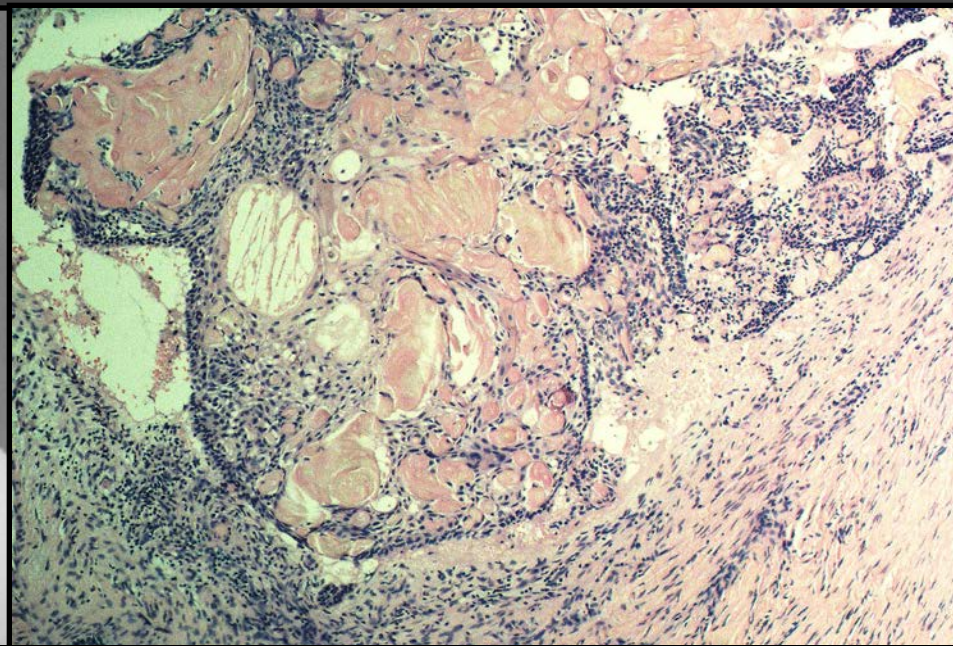
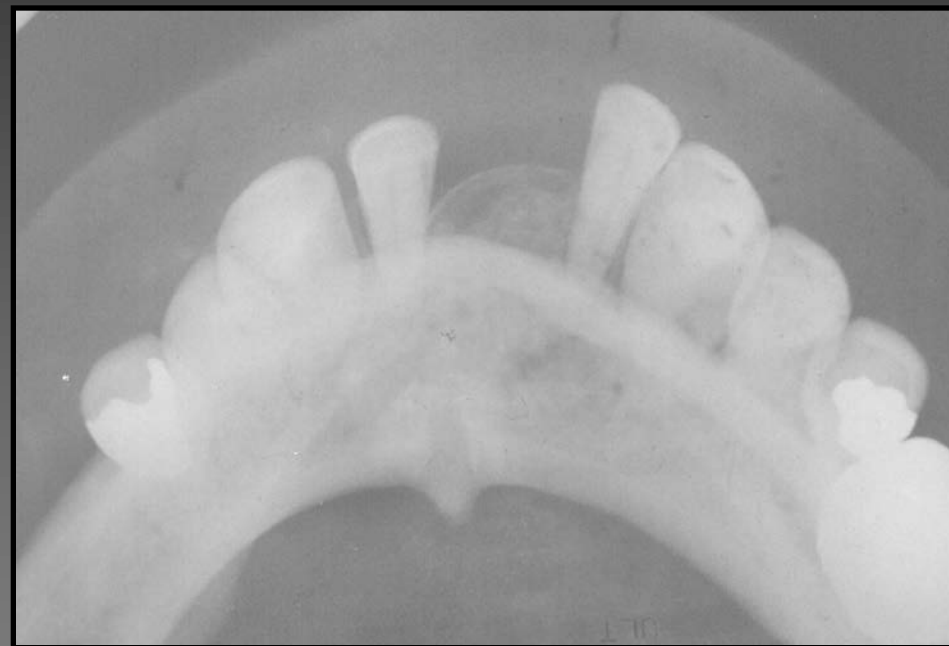
Calcifying Epithelial Odontogenic Cyst



Odontogenic Ghost Cell Tumor

- Solid Variant of CEOC
- All ages
- Posterior Mandible
- Target Appearance
- Peripheral Variants
- Component of Odontomas
- Enucleation

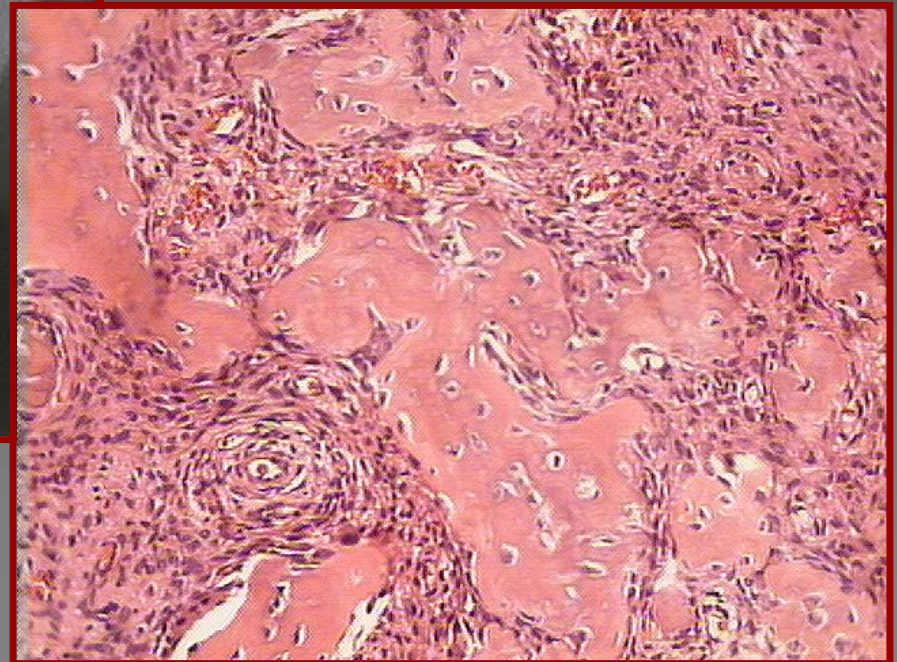
Odontogenic Ghost Cell Tumor



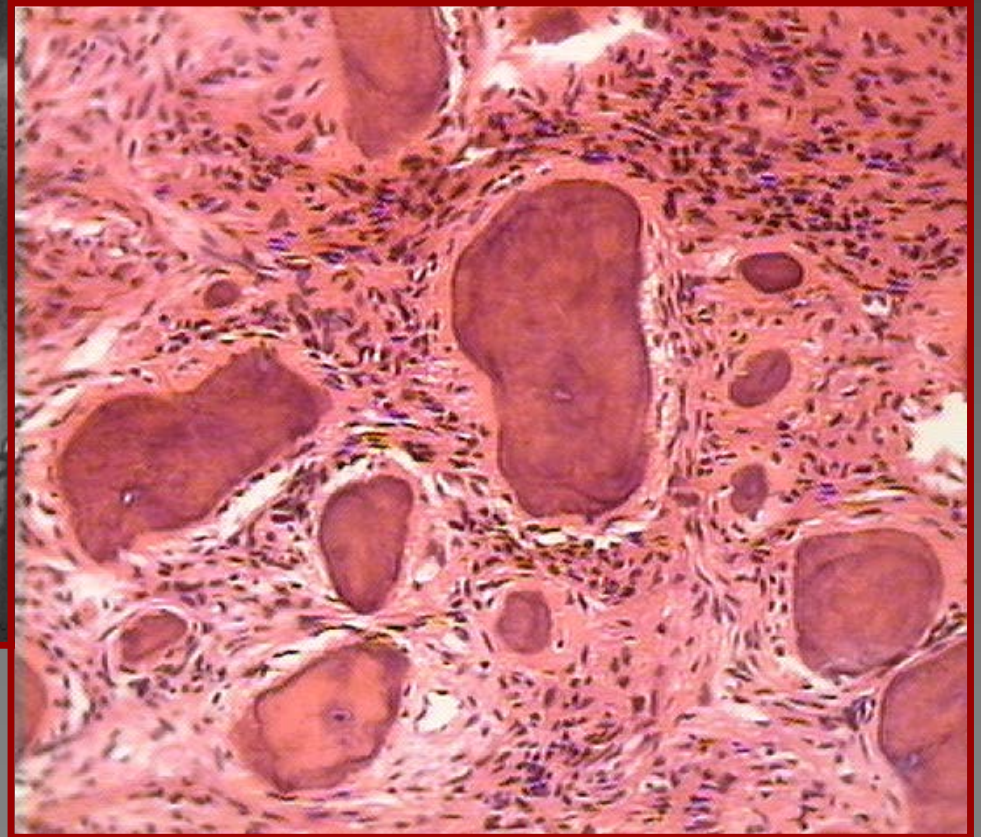
Ossifying Fibroma

- Solid Variant of CEOC
- Young Adults
- Posterior Mandible
- Variable opacification, Target
- Well Demarcated
- Ossifying, Cementifying
- Enucleation
- Aggressive Forms

Ossifying Fibroma



Ossifying Fibroma (psammomatoid, cementifying)



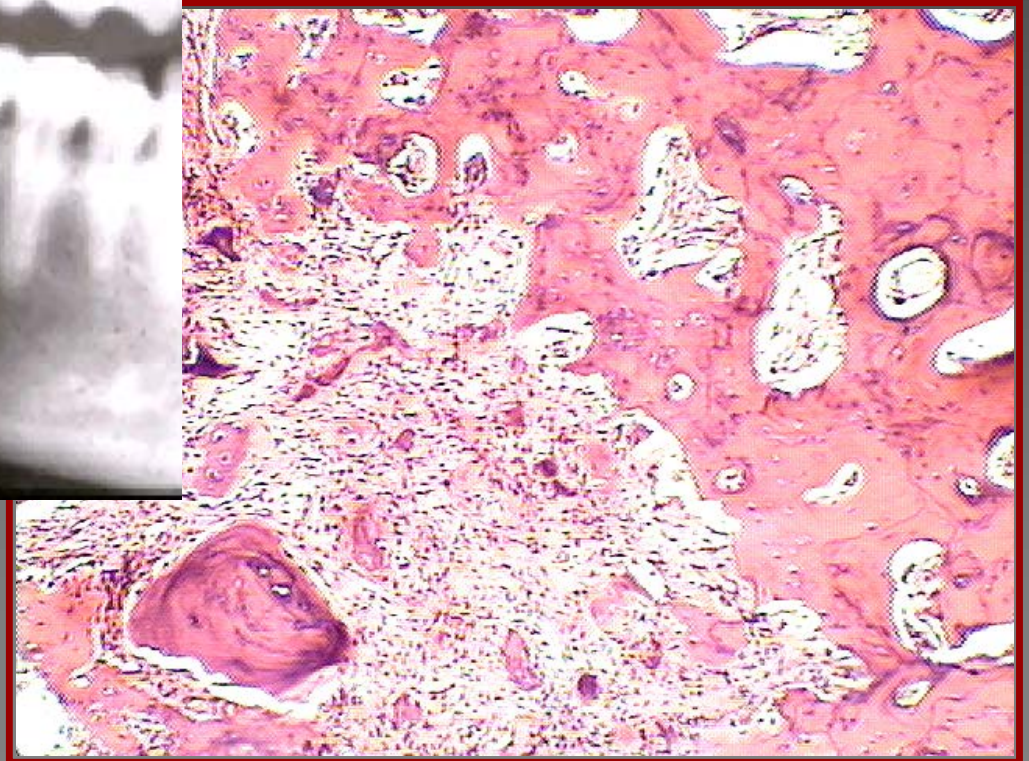
Focal Osseous Dysplasia

- Edentulous Regions
- Variant of Florid Osseous Dysplasia
- Nonexpansile
- Target Appearance
- Fibro-Osseous Lesion
- Enucleation

Focal Osseous Dysplasia



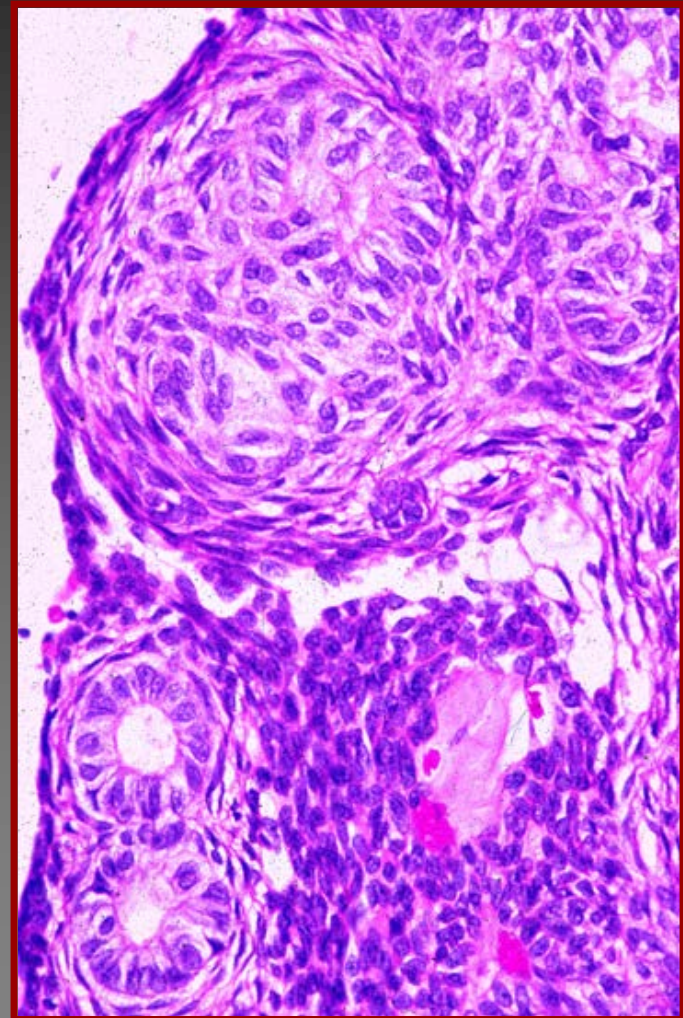
Focal Osseous Dysplasia (FOD)



Odontogenic Adenomatoid Tumor

- Premolar/Anterior
- Expansile
- Target Appearance
- Teens
- Females>Males
- Thick Capsule
- Enucleation

Adenomatoid Odontogenic Tumor



Odontoma

- Premolar/Anterior
- Composite Form
- Expansile/Nonexpansile
- Target Appearance
- Teens
- Enucleation

Odontoma

